

# Relationship of Oscillating Aurora to Substorms and Magnetic Field Line Resonances

James A. Wanliss and Robert Rankin

Department of Physics, University of Alberta  
Edmonton, AB, T6G;  
wanliss@space.ualberta.ca

**Abstract.** Oscillating auroral phenomenon are frequently associated with magnetospheric substorms. We present an analysis of photometer data which displays such oscillations in luminosity. We use data from the Gillam station in the CANOPUS array for April 1, 2000. Clear pulsations are observed at 2.2 mHz. The latitudinal distribution of the pulsations indicates that the luminosity variations, caused by precipitating electrons and protons, are modulated by large scale global compressional modes [field line resonances]. The proton and electron aurora were found to oscillate essentially out of phase. As well, the variation of phase across the peak in the luminosity resonance follows the pattern expected for the coupling of resonant Alfvén modes by normal compressional modes in the magnetotail.

## 1. Introduction

Oscillating auroral phenomenon have been observed via a wide variety of instruments. Examples include magnetometers [Jacobs *et al.*, 1964], coherent scatter radar [McDiarmid *et al.*, 1994; Fenrich *et al.*, 1995], and photometer and all sky imager observations [Samson *et al.*, 1992; Liu *et al.*, 1995; Wanliss *et al.*, 2002; Milan *et al.*, 2001; Lyatsky *et al.*, 1999]. In a cursory survey of ten years of photometer data from the Gillam photometer of the CANOPUS array, we found that luminosity oscillations were frequently associated with magnetospheric substorms. This, of course, raises the question as to the mechanisms which cause these oscillations, and the relationship between oscillating aurora and the substorm.

Several studies have considered the effects of magnetohydrodynamic (MHD) waves on particle precipitation in the ionosphere [Berger, 1963; Davidson, 1990; Milan *et al.*, 2001], and a strong link has been suggested between discrete auroral arcs and MHD waves [Samson *et al.*, 1996]. MHD field line resonances (FLRs) are formed through wave coupling of compressional and shear Alfvén waves. Theory describing this coupling is described in Chen and Hasegawa [1974] and

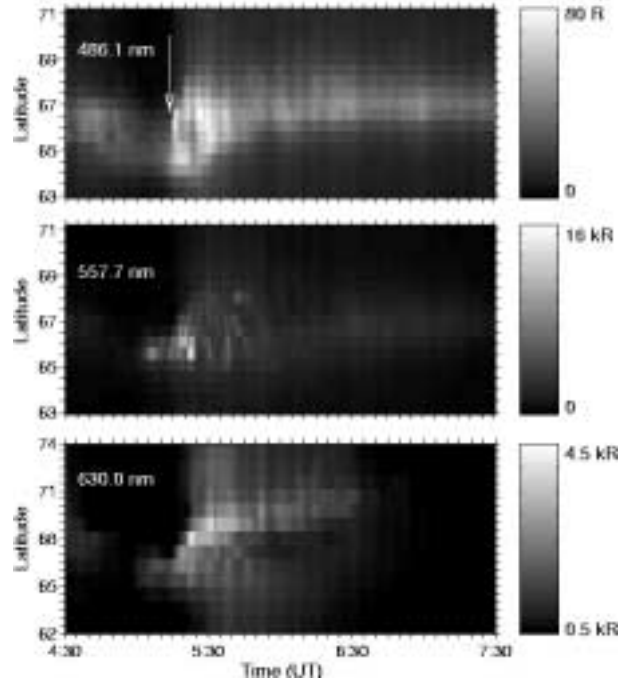
Southwood [1974]. Theoretical considerations show that the FLR should have a narrow radial localization and a 180° phase shift of the electric and magnetic wave fields across the center of the resonance, and a similar shift across the belt of auroral oscillation [Walker *et al.*, 1979; Liu *et al.*, 1995]. These are testable predictions, and can be compared to photometer observations. The purpose of this letter is to report comparisons of FLR model theoretical predictions with data observations and to report a strong correlation of oscillating aurora with substorms. This gives some insight into the source and modulation mechanism of the precipitating protons and electrons that are responsible for the luminosity variations observed by photometers.

In terms of the substorm, it is not clear what type of disturbance excites compressional modes at expansive phase onset. Whatever the disturbance is, it affects the magnetosphere by exerting stresses in the near-earth regions. The local compression of the configuration generates compressional MHD waves that encounter positive gradients in the Alfvén velocity that lead to the excitation a shear Alfvén waves on magnetic shells distant from the source of the onset. The model of Liu *et al.* [1995] considers the dynamics of the substorm recovery

phase, the period immediately following onset, and thus after the excitation of compressional modes which propagate the substorm disturbance through the magnetosphere. We will compare data from photometer observations with model predictions. After substorm onset, energy from the compressional mode can radiate downtail and towards the flanks. This resonant absorption occurs when compressional mode energy is converted in the inner magnetotail and at the plasma sheet boundary layer. As the compressional wave front expands to these locations the Alfvén velocity gradient is such that resonant shear Alfvén waves will be set up. Because of the coupling of energy to spatially different locations, auroral activity is expected to occur in distinct high- and low-latitude locations. Theory predicts that the high-latitude activity will feature a poleward phase shift of  $180^\circ$  across the belt of auroral oscillation [Liu *et al.*, 1995; Hughes *et al.*, 1983]. Similarly, the low-latitude activity should exhibit a  $180^\circ$  equatorward phase shift and a temporally varying parallel electric field will be established along the resonant field line [Block, 1990; Liu *et al.*, 1995]. A consequence of this parallel electric field is that precipitation of protons and electrons will be anticorrelated. If there were no parallel electric field there should be no such phase difference and the precipitation of protons and electrons would likely be similarly modulated [Liu *et al.*, 1995].

## 2. Data observations and analysis

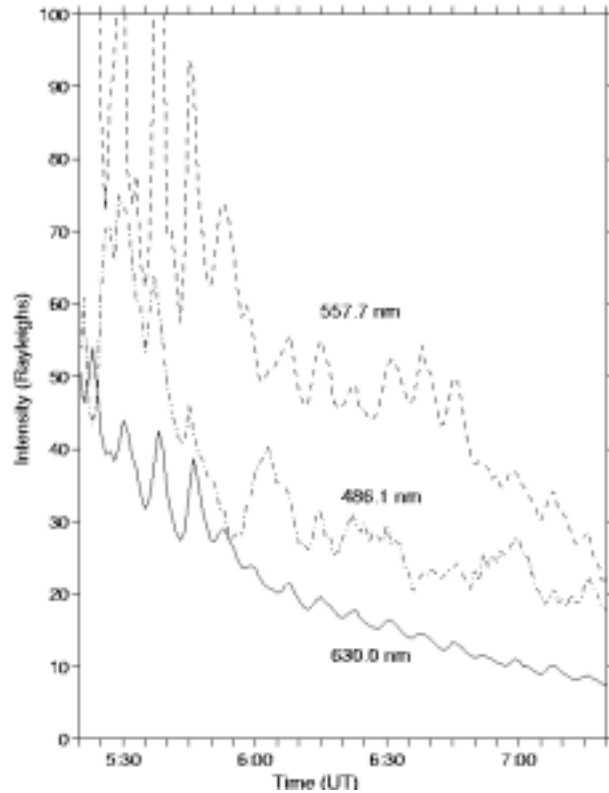
In this section, we test the theoretical predictions with observations from the Gillam photometer station. The time resolution of the photometer is two complete scans per minute, and scans are performed along a meridian closely aligned with geomagnetic north. A magnetospheric substorm on April 1, 2000 is observed after approximately 0420 UT, with expansive phase onset at about 0525 UT. Prior to onset, growth phase aurorae were observed with the usual equatorward motion, indicating loading and the stretching of magnetotail field lines [Voronkov *et al.*, 1999; Wanliss *et al.*, 2000].



**Figure 1.** Keograms of intensity of auroral emissions from the Gillam meridian scanning photometer measured on April 1, 2000. Data are shown for three wavelengths, at 486.1, 557.7, and 630.0 nm. The estimated time of substorm expansive phase onset is indicated by the arrow on the top plot.

Figure 1 shows the photometer keograms from lines sensitive to electron and proton precipitation. The time of onset is indicated by the white line in the uppermost plot. The 486.1 nm H $\beta$  emission is caused by precipitation of protons of tens of keV, 557.7 nm from hot electrons of several keV, and 630.0 nm from warm electrons of a few hundred eV. Luminosity oscillations are present in each of the three wavelengths shown, but are not clearly visible in the keogram. For 630.0 nm, two latitudinal regions of activity can be distinguished, between approximately  $66^\circ$  to  $68^\circ$  and  $70^\circ$  to  $72^\circ$ . Oscillations in the emissions are more easily seen in Figure 2, which shows a scaled intensity plot for the three wavelengths taken at  $66.4^\circ$ . In Figure 3 the power spectrogram for this event is shown for the three wavelengths. The spectrogram was obtained by Fourier analysing each latitude-time series and collecting them together in a contour plot as shown. This event is characterised by a resonance structure centered around 2.2 mHz,

although other peaks are also evident, especially for 630.0 nm near 2.9 and 3.8 mHz. The peak around 2.2 mHz has power at low- and high-latitude regions. The higher latitude peak is not clear in H $\beta$ , although its peak in power is spread over nearly 4 degrees in latitude. It is likely that since the proton aurora is more diffuse because of charge exchange experienced by the precipitating protons, it is unable to resolve the poleward most oscillating structure.

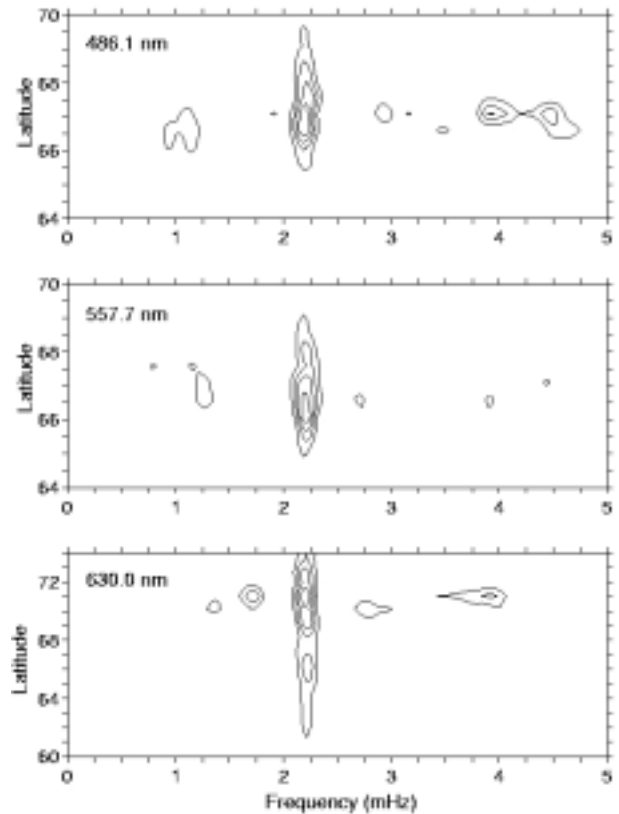


**Figure 2.** Samples of the 486.1, 557.7, and 630.0 nm emissions between 0520-0720 UT at 66.4°. The 557.7 and 630.0 nm emissions have been scaled by a factor of 50 for easier comparison.

A test of the phase correlation between protons and electrons can be considered via the following measure

$$\sigma = \frac{\int \delta I_{486.1} \delta I_{557.7}}{|\int \delta I_{486.1} \delta I_{557.7}|}$$

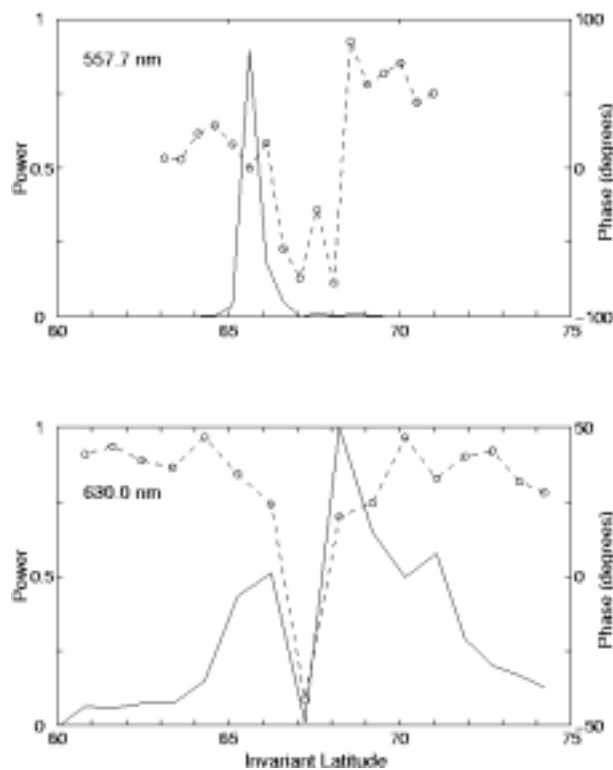
where  $\delta I$  is the signal with the static part removed. The correlation was computed between 0520-0620 UT and we found that at latitudes of 66.6°, 66.1°, and 65.6°  $\sigma = -0.55, -0.84, -0.33$ , respectively.



**Figure 3.** Contour plots of power spectra for 486.1, 557.7, and 630.0 nm. Power spectra were computed from the time series of each latitudinal bin.

Whereas a correlation of  $\sigma = -1$  implies the signals are out of phase,  $+1$  means the signals are perfectly in phase, and a value near 0 means the time series are either uncorrelated or out of phase. Our results indicate an anticorrelation, and thus are consistent with a FLR mechanism and a parallel electric field. This is different from the result of *Liu et al.* [1995] who found a positive correlation for the event they considered, although this may be due to the limited spatial resolution of the Gillam photometer. This difference reflects the possibility that the precipitation process may involve competing mechanisms which affect the overall signature observed by photometers. A further quantitative test is to see whether the latitudinal phase shifts across the auroral optical resonances show the predicted phase pattern. The upper plot in Figure 4 shows the power and phase shift across the 2.2 mHz resonance for the 557.7 nm emissions. The phase shift across the peak at  $\sim 66^\circ$  is about  $120^\circ$

running from large to small values. This is the expected theoretical pattern for the lower latitude resonance, although the phase shift should be a full  $180^\circ$ . No clear power peak is observed at higher latitudes, but there is a  $180^\circ$  phase shift running from low to high values across about  $68.5^\circ$ , suggesting the presence of a higher latitude resonance. The lower figure shows the phase change across the resonance for 630.0 nm. Two clear peaks in power are at  $\sim 66^\circ$  and  $\sim 69^\circ$ . Whereas the phase change across the lower latitude peak is from  $50^\circ$  to  $-50^\circ$ , it is from  $-50^\circ$  to  $50^\circ$  for the higher latitude peak. Thus the phase change across the low- and high-latitude resonances are qualitatively correct, although not the full  $180^\circ$  expected from theory.



**Figure 4.** Latitudinal phase (dashed) and power (solid) distributions of the 2.2 mHz power for 557.7 and 630.0 nm emissions.

### 3. Discussion

In our investigation of photometer data from the Gillam station of the CANOPUS array we found luminosity oscillations frequently associated with magnetospheric substorms. Detailed statistics of

this relationship will be reported later. The primary purpose of this letter has been to present evidence supporting the view that modulation of the substorm associated auroral particle precipitation pattern is due to resonant Alfvén waves which carry parallel electric field. The association of parallel electric fields with Alfvén waves has been noted previously [Hasagawa, 1976; Goertz and Boswell, 1979; Rankin *et al.*, 1997; Keiling *et al.*, 2000]. The data presented here, for the substorm recovery phase on April 1, 2000, support the concept that compressional waves generated during expansive phase onset are resonantly converted at inner and outer boundaries of the plasma sheet to shear Alfvén waves which carry parallel electric field.

This event is helpful for comparison with theory since luminosity oscillations exist in two distinct latitudinal bands and frequencies around 2.2 mHz. In terms of the MHD theory of the propagating substorm disturbance, the lower-latitude band represents the inner resonance, and the higher-latitude band represents the outer resonance generated after expansive phase onset. These resonances develop after compressional modes couple to shear modes in the inner magnetotail and near the plasma sheet boundary layer. Additional comparisons with theory show agreement, in that the proton and electron aurora over the resonance location are approximately out of phase. Such a phase difference is expected when a parallel electric field develops since the electric field will periodically retard proton precipitation and accelerate electrons. We regard the strongest evidence supporting the mechanism discussed above to be the latitudinal phase shifts across the inner and outer resonances, which have the sense expected by theory (Figure 4). The phase shifts are not, however, a full  $180^\circ$ , as predicted. This may be because while resonances can be very narrow (a few ion gyroradii), the photometer resolution in our study is over 100 km and the true latitudinal phase variation may be modified.

### Acknowledgments

CANOPUS is owned and operated by the Canadian Space Agency.

## References

- Berger, S., Giant pulsations in the magnetic field and pulsating aurora, *Planet. Space. Sci.*, **11**, 867, 1963.
- Block, L. P. and C.-G. Fälthammer, The role of magnetic field-aligned electric fields in auroral acceleration, *J. Geophys. Res.*, **95**, 5877, 1990.
- Chen, L. and A. Hasegawa, A theory of long-period magnetic pulsations. 1, Steady excitation of field line resonances, *J. Geophys. Res.*, **79**, 1024, 1974.
- Davidson, G.T., Pitch-angle diffusion and the origin of temporal and spatial structures in morningside aurorae, *Space. Sci. Rev.*, **53**, 45, 1990.
- Fenrich, F.R., et al., ULF high and low-m field line resonances observed with SuperDARN, *J. Geophys. Res.*, **100**, 21535, 1995.
- Goertz, C.K. and R.W. Boswell, Magnetosphere-ionosphere coupling, *J. Geophys. Res.*, **84**, 7239, 1979.
- Hasegawa, A., Particle acceleration by MHD surface wave and formation of aurora, *J. Geophys. Res.*, **81**, 5083, 1976.
- Hughes, W.J., Hydromagnetic waves in the magnetosphere, in *Solar-Terrestrial Physics: Principles and Foundations*, edited by R.L. Carovillano and J.M. Forbes, D. Reidel, Norwell, Mass., 1983.
- Jacobs, J.A., et al., Classification of geomagnetic micropulsations, *J. Geophys. Res.*, **69**, 180, 1964.
- Keiling, A. et al., Large Alfvén wave power in the plasma sheet boundary layer during the expansion phase of substorms, *Geophys. Res. Lett.*, **27**, 3169, 2000.
- Liu, W.W., et al., Theory and observation of auroral substorms: a magnetohydrodynamic approach, *J. Geophys. Res.*, **100**, 79, 1995.
- Lyatsky, W. et al., Field line resonance interference model for multiple auroral arc generation, *J. Geophys. Res.*, **104**, 263, 1999.
- McDiarmid, D.R., et al., Simultaneous observation of a traveling vortex structure in the morning sector and a field line resonance in the postnoon sector, *J. Geophys. Res.*, **99**, 8891, 1994.
- Milan, S.E. et al., Auroral forms and the field-aligned current structure associated with field line resonances, *J. Geophys. Res.*, **106**, 25825, 2001.
- Rankin, R. et al., Shear flow vortices in magnetospheric plasmas, *Phys. Plasmas*, **4**, 829, 1997.
- Samson, J.C., et al., Substorm intensifications and field line resonances in the nightside magnetosphere, *J. Geophys. Res.*, **97**, 8495, 1992.
- Samson, J.C., et al., Observations of field line resonances, auroral arcs, and auroral vortex structure, *J. Geophys. Res.*, **101**, 17373-17383, 1996.
- Southwood, D.J., Some features of field line resonances in the magnetosphere, *Planet. Space. Sci.*, **22**, 483, 1974.
- Voronkov, I., et al., Dynamics of the substorm growth phase as observed using CANOPUS and SuperDARN instruments, *J. Geophys. Res.*, **104**, 28491-28505, 1999.
- Walker, A.D.M., et al., STARE auroral radar observations of Pc 5 geomagnetic pulsations, *J. Geophys. Res.*, **84**, 3373, 1979.
- Wanliss, J.A., et al., On the use of photometer data to map dynamics of the magnetotail current sheet during substorm growth phase, *J. Geophys. Res.*, **105**, 27673-27684, 2000.
- Wanliss, J.A., et al., Field line resonances in a stretched magnetotail: CANOPUS optical and magnetometer observations, *J. Geophys. Res.*, in press, 2002.